



Eni contribution to Mozambique sustainable growth

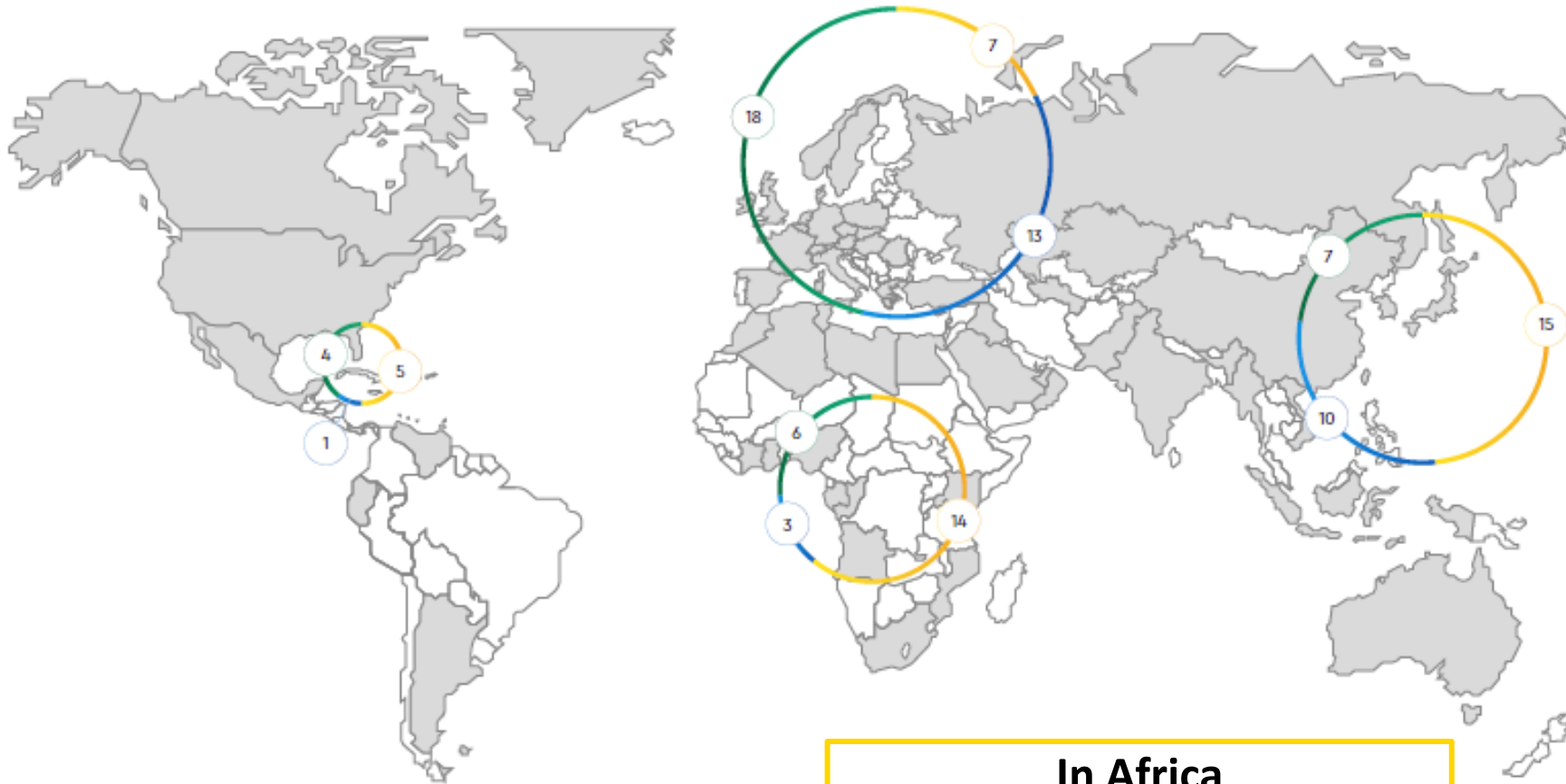
Raffaello Matarazzo

International Affairs Senior Advisor, Sub Saharan Africa

May 2021

*This document has a restricted distribution.
Its contents may not otherwise be disclosed without Eni authorization.*

Eni – At a glance



Worldwide

-  **68** Countries
In the world
-  **31 k**
Employees
-  **197** mln €
Total R&D Investment
-  **94.8** mln €
Community Investment

In Africa

- E&P
- G&P
- R&MeC



14 Countries of Presence

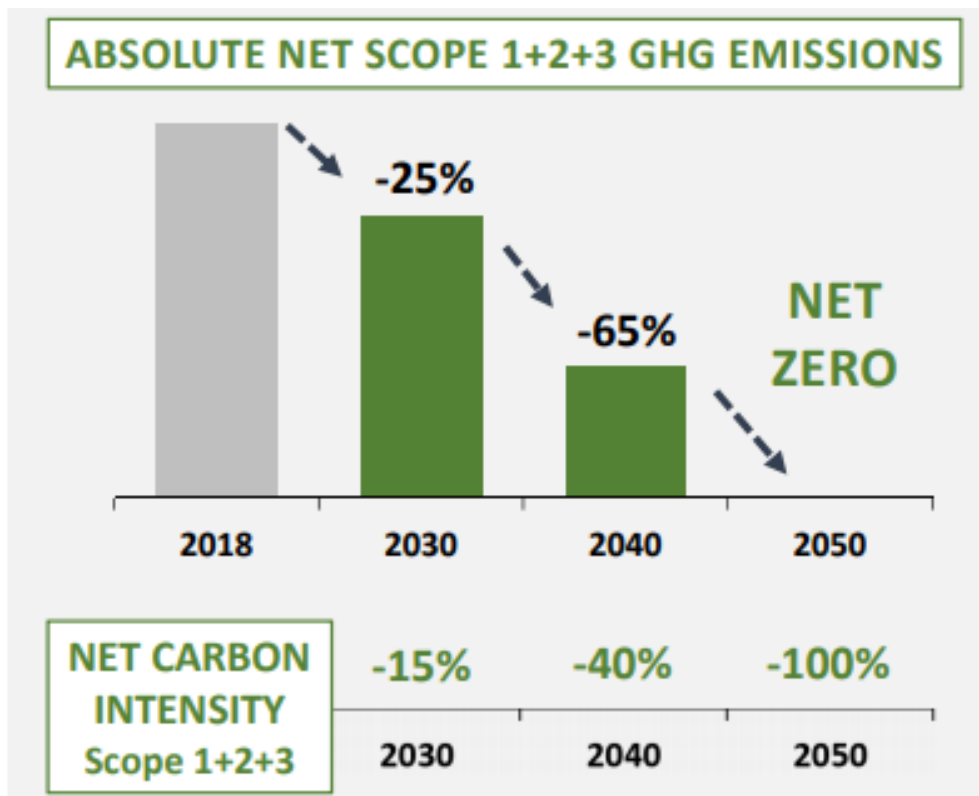


3,740 People working with us

>50% of Eni energy production



Eni net zero emissions by 2050



LEVERS

- ✓ **CARBON FREE PRODUCTS AND SERVICES**
- ✓ **INCREASED SHARE OF GAS ON TOTAL PRODUCTION**
- ✓ **BIO-METHANE FOR DOMESTIC USE AND MOBILITY**
- ✓ **BIOREFINERIES AND CIRCULAR ECONOMY**
- ✓ **BLUE AND GREEN HYDROGEN**
- ✓ **CCS AND REDD+ PROJECTS**

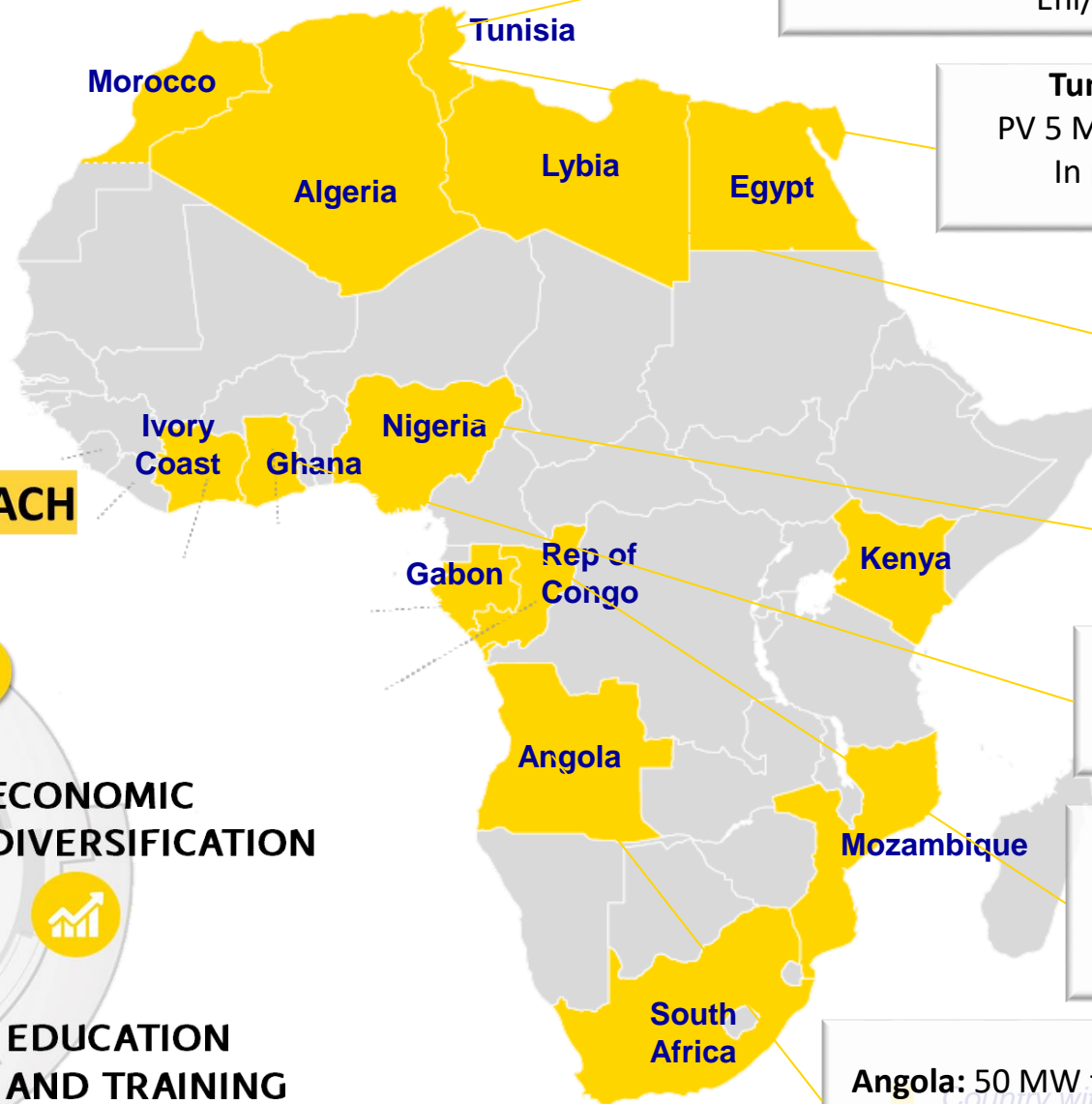
FULLY COMPREHENSIVE METHODOLOGY
CONSIDERING ALL OUR ACTIVITIES AND ALL PRODUCTS WE TRADE

*This document has a restricted distribution.
Its contents may not otherwise be disclosed without Eni authorization.*



Eni's contribution to Africa's energy transition

14 countries of presence
 3,740 employees
 >50% of Eni Oil&Gas production



Tunisia : Tataouine Greenfield project PV 10 MWp
 In commissioning, COD 2020
 Eni/ETAP 50 % each

Tunisia: Adam Brownfield project
 PV 5 MWp + Storage 2.2 MWp/1.5 MWh
 In production from January 2020
 Eni/ETAP 50 % each

Algeria: BRN Brownfield project PV 10 MWp
 In production from July 2019 Eni/Sonatrach
 50% each

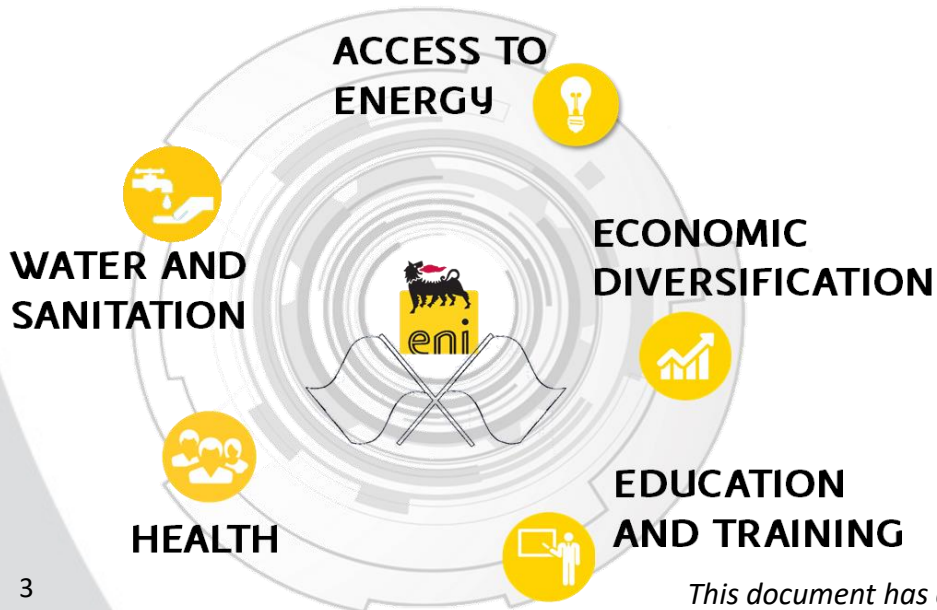
Nigeria: a 930 MW CCGT, the largest IPP in West Africa, generating 20% of country's electricity

Ghana: main non associated gas project in SSA fully destined to domestic market

Congo: a 484 MW gas power plant generating 72% of country's electricity

Angola: 50 MW first ever large scale solar PV plant, under development

DUAL FLAG APPROACH

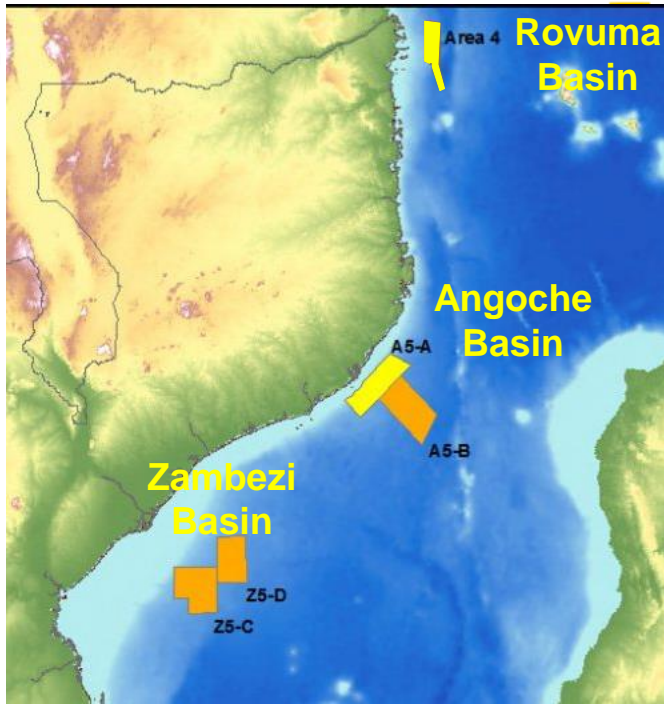


*This document has a restricted distribution.
 Its contents may not otherwise be disclosed without Eni authorization.*



Eni in Mozambique: Concession Areas

Concession Areas

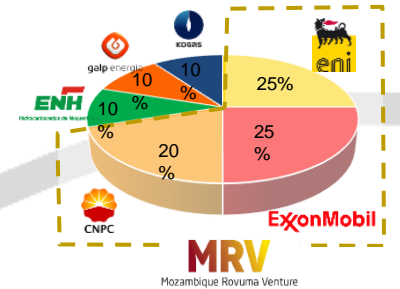


- Operated
- Non Operated

Rovuma Area 4

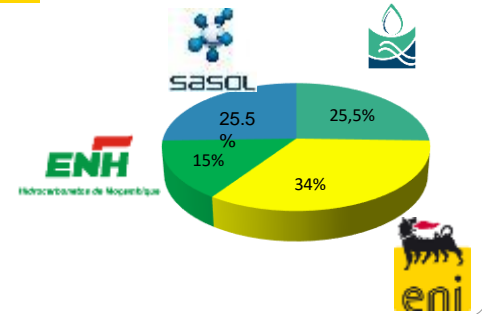
- **Mozambique Rovuma Venture (MRV)** is the Operator of the Offshore Rovuma Basin Area 4 EPCC with 70% Direct Participation.
- **Eni Rovuma Basin B.V. (ERB)** is MRV Offshore Delegated Operator for **Area 4 Upstream** Development including Coral South FLNG Project

(* Eni, ExxonMobil and CNPC are shareholders of MRV and have a indirect participation in Area 4 equivalent to 25%, 25% e 20% respectively



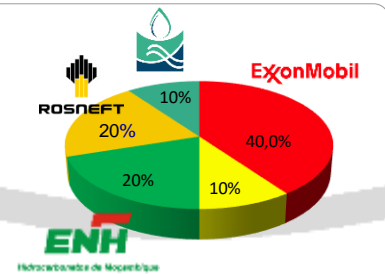
Angoche A5-A

- **Eni Mozambico** is the Operator of the Angoche Block A5-A EPCC with 34%
- EPCC Effective: 01th January 2019
- Area: 5,133 Km²
- Water Depth: 300 – 1,800 m
- Exploration Periods: 4+2+2 Yrs



A5-B, Z5-C & Z5-D

- **Eni Mozambico** acquired 10 % direct participation in each of the 3 blocks
- Farm In Effective from June 2019
- ExxonMobil is the Operator





MAIN GOAL

PROMOTE SOCIO-ECONOMIC DEVELOPMENT

- Social Investment linked to the Plan of Development (POD) of Area 4 gas Projects (Coral South and Rovuma LNG)

- Contribute to the Agenda 2030 Sustainable Development Goals (SDGs)



- Contribute to Government Strategic Plans for development at national and Provincial level



- Compliant to International Performance Standards (IFC PS)

- Promote coordination and synergies\partnerships with international development actors



- Reflects engagement with local stakeholders (authorities and communities)

PARTNERSHIPS



This document has a restricted distribution.

Its contents may not otherwise be disclosed without Eni authorization.

Coral South Project: Community Investment Initiatives



Education & vocational training

- Schools construction and rehabilitation
- Soft skills & nutrition in primary Schools
- Rehab of labs, training and certification and scholarships

Access to Water and Clean Energy

- Clean cooking - Production and distribution of ICS
- Assessment of target locations and business model (mecufi project) for rural electrification and water wells

Community resilience and biodiversity protection

- Community development & coral reef protection in Vamizi Island
- Sustainable agriculture, community resilience and biodiversity protection (Mecufi and Quirimbas)

Emergency response (covid 19 and IDPs)

- Safe water tanks & soap
- Home works and prevention material
- Support to IDPs (Pemba, Metuge and Mecufi)**
- Food distribution (Maputo)

Social Infrastructures

- Rehabilitation of multipurpose sport fields





Social Investment

- Since 2012 Eni and Area 4 partners invested in community development and local content around **35 MUSD**
- In the next 5 years additional **17 MUSD** are planned to be invested on Coral South

*This document has a restricted distribution.
Its contents may not otherwise be disclosed without Eni authorization.*



EDUCATION

- **2 primary schools** in Paquitequete (Pemba) community hosting 5000 students: 14 classrooms, administrative block, 2 libraries, equipment, multipurpose field, solar PV, training of teachers
- **1 kindergarten** hosting 300 pupils in Pemba, library, drainage, playground
- **1 multipurpose field** in Maputo for 300 kids, 1 playground



TRAINING

- **200 Program:** international & multidisciplinary for company employees trained in Italy, UK, Indonesia, Congo-Brazzaville in different technical disciplines
- **Junior professor Program** at Universidade Edoardo Mondlane: 8 future professors trained at Universities in Italy and China
- **Capacity building to public officers** (INP, ENH) on HSE and petroleum engineering
- **Vocational training program** in collaboration with Don Bosco Institute, Colleges and Institutes of Canada, Ministry of Science Technology, Higher and Professional Education to support the Pemba Industrial and Commercial Institute

*This document has a restricted distribution.
Its contents may not otherwise be disclosed without Eni authorization.*



ACCESS TO WATER

- **Water system** built in Palma serving more than 4,000 people with 20 liters of water per person per day
- 2 water wells, 2 water tanks, 3 public standpoints and a water distribution network of 1,2 km length
- Training and capacity building of the village water committee on sanitation, maintenance and management

*This document has a restricted distribution.
Its contents may not otherwise be disclosed without Eni authorization.*



HEALTH

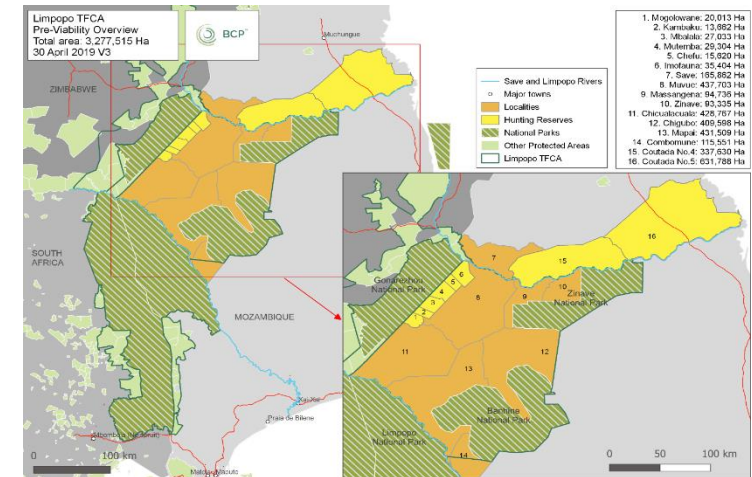
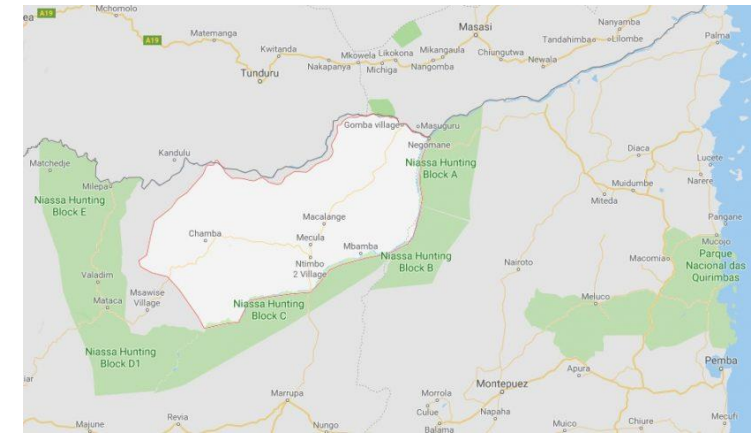
- Strengthening of **Emergency and Intensive Care Services** of the Cabo Delgado Province Referral Hospital through: supply of equipment, capacity building and technical assistance, **Oxygen Production Plant**
- Strengthening of **Maternal and Child Services** in Palma District through: construction of a new Operation Block, 1 Casa de Espera, capacity building of a Surgical team, Pediatricians, Obstetrics

The MOU between the Government of Mozambique and ENI S.p.A.



Main features

- Joint commitment to Support the Economic and Social Development Agenda of the Government of Mozambique
- Contribution to achievement of
 - United Nations Sustainable Development Goals (“SDGs”) as set out in the 2030 United Nations Agenda for Sustainable Development
 - Nationally Determined Contributions (“NDC”) as part of The Paris Agreement
- Target: to account for and certify **more than 1Mton of CO2 eq. per year** of emission reduction capacity in the Country by 2025.
- Areas of cooperation will include **Local Development Initiatives**, also under the **REDD+ framework**, mainly focused on *Life on Land* for promoting Sustainably managed forests, *Economic diversification* and *Education*.
- Locations under evaluation:
 - Niassa Reserve and Quirimbas National Park with a Community Population involved of about 130,000, 1,4 Mha, 1,4 MtCO₂\y – CarbonSink project developer
 - Limpopo Greater Transfrontier Conservation Area, 1 Mha, at least 500 KtCO₂\y – BioCarbonPartners & PeaceParkFoundation project developer



Health Brief: COVID-19 Emergency Response Initiative



- MoU signed with the GoM for the provision of support to the National Response Plan from the Ministry of Health.
- The support was based on the **purchase and delivery of hospital medical equipment and PPE for health personnel in Maputo City, Maputo Province and Cabo Delgado Province.**
- The support included:
 - a fully equipped ambulance delivered to the DPS of Cabo Delgado.
 - 3 CE certified respirators to be used in the Intensive Care Department of the Provincial Hospital of Cabo Delgado
 - PPE (face masks, protective suits, overshoes, surgical headgear goggles), dispensers and sanitizing Items provided to the DPS Maputo City, Maputo and Cabo Delgado Provinces



Delivery of the Support in Maputo



Part of the Support to Cabo Delgado



Delivery of the Support in Cabo Delgado

*This document has a restricted distribution.
Its contents may not otherwise be disclosed without Eni authorization.*



Thank you